



**GPE.**  
Fully Managed

[gpe.co.uk/portfolio/16-dufours-place](https://gpe.co.uk/portfolio/16-dufours-place)

# 16 Dufour's Place

A WORKPLACE CELEBRATING CREATIVITY AND CULTURE

16 Dufour's Place,  
Soho, W1F 7SP

# Contents

**03** What's in your building



**04** Why us



**06** Working towards a better world



**07** Availability schedule



**08** Floorplans



**10** Location



**15** Get in touch



# A modern, collaborative workplace that oozes Soho attitude

Set over seven storeys and alive with technology and amenities, 16 Dufour's Place is a statement workplace where your business can thrive.



## Shared courtyard

Step outside to the communal courtyard with break-out collaboration space. It's marvellous!



## Complimentary meeting rooms

Additional tech-equipped, private spaces are bookable free of charge.



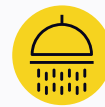
## Cycle storage

19 super-secure cycle spaces for your beloved two wheeled companion.



## Spacious, shared lounge

With ultra-fast Wi-Fi, great coffee and sweet treats from Luminary Bakery, you'll never drop off.



## Shower cubicles

Access to five showers to start your day feeling fresh.

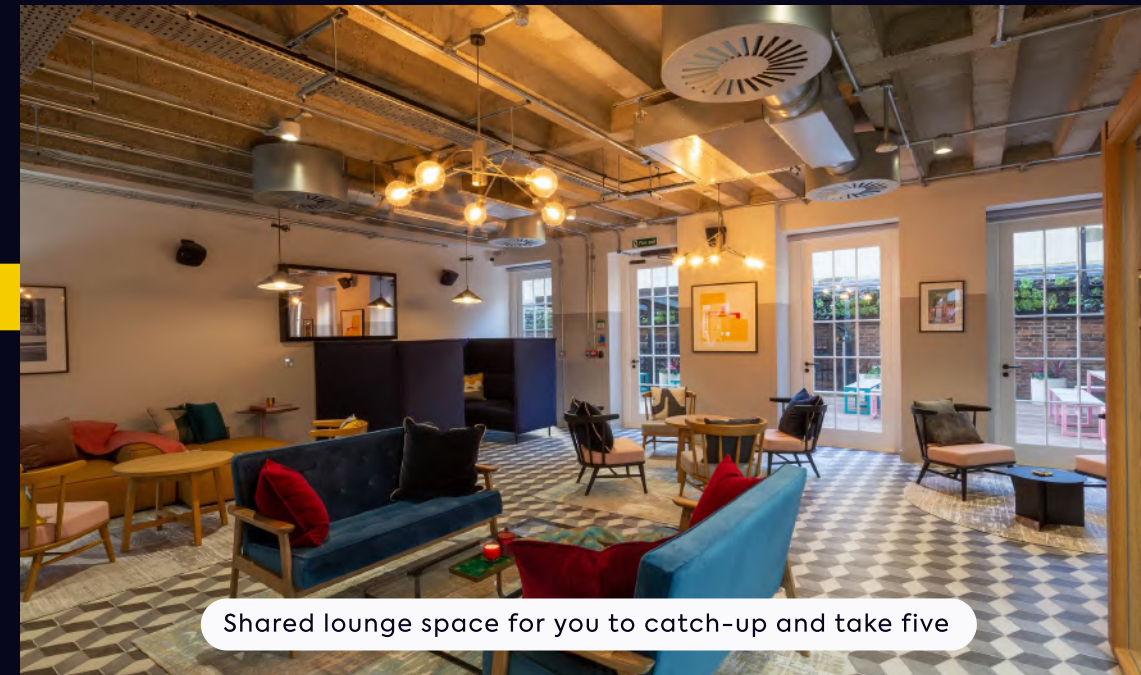


## sesame® workplace app

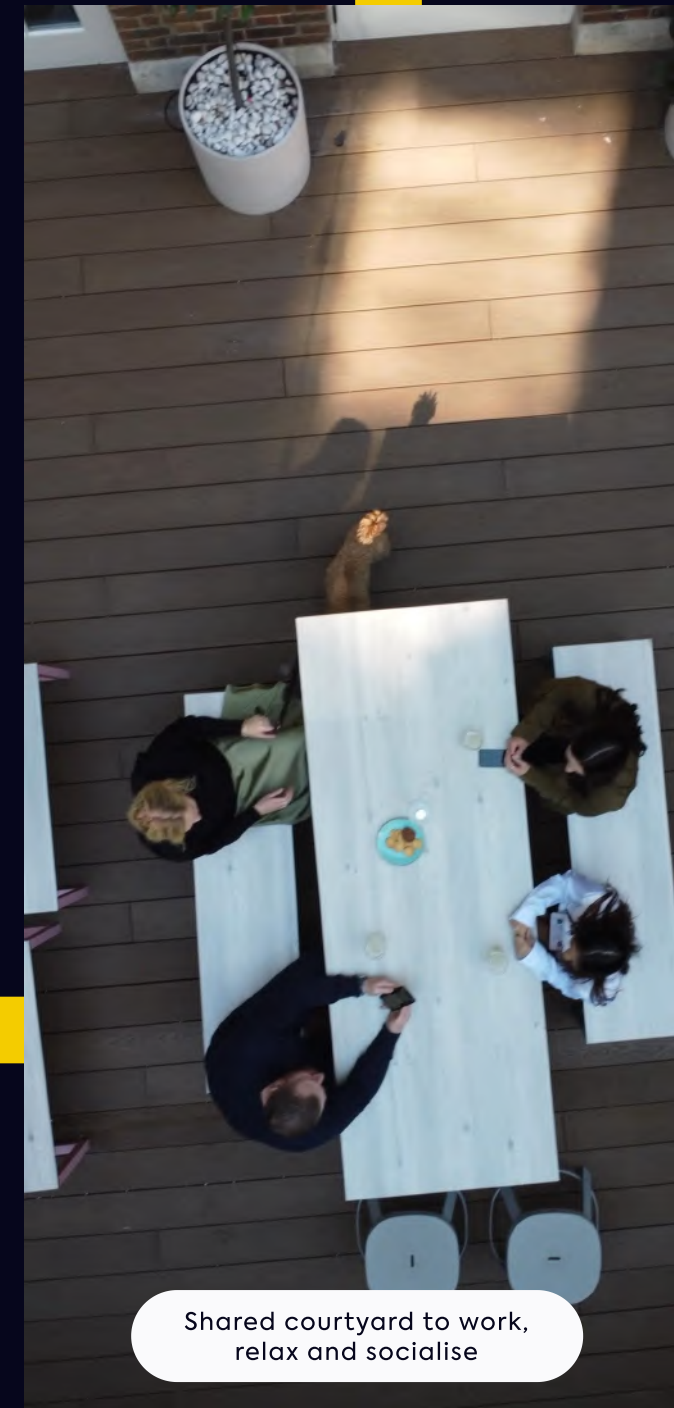
For contactless access, plus other features depending on your needs.



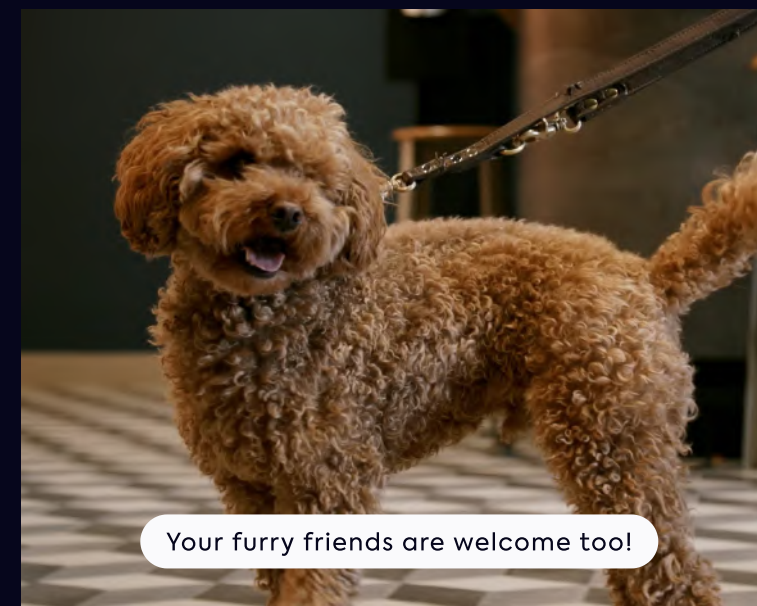
Regular social activities to support your wellbeing



Shared lounge space for you to catch-up and take five



Shared courtyard to work, relax and socialise



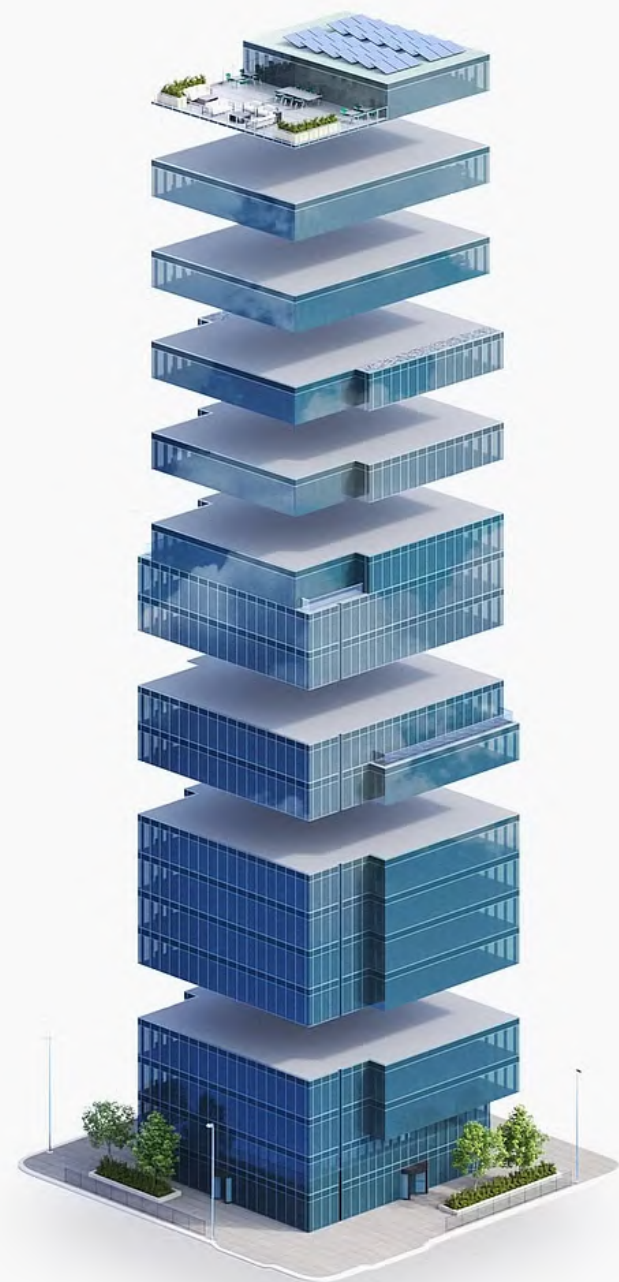
Your furry friends are welcome too!



Barista bar serving free pastries and refreshments daily!

What's in your building

# It's all included in one bill, no hidden extras



- Events, Food and Beverages
- Security
- IT Connectivity and Support
- Utilities
- Cleaning and Maintenance
- Fully Furnished Workspace
- Building Service Charge
- Business Rates
- Rent

## 6 reasons to choose GPE Fully Managed



### 1 – Fully managed and fully yours

Say hello to a furnished workspace that's exclusively yours. Our Fully Managed service is a truly hassle-free experience.

[How we make it hassle-free](#)



### 2 – All-in-one bill with no hidden extras

Say goodbye to multiple bills. Each month you'll receive one all-inclusive bill from us, and, your bill remains fixed for your contract period.

[See what's included](#)



### 3 – Relax, you're in safe hands

We've been doing this for a long time. Our in-house experts curate the perfect experience, so you can enjoy market-leading workspaces. We own and manage our buildings, so you'll always deal directly with us.

[Learn more about us](#)



### 4 – Plug in and go – your tech's all sorted

You get safe, secure and ultra-fast wireless connectivity so you can work seamlessly from day one, with IT help on-hand. Everyone gets access to sesame™, your award-winning workspace app.

[Head over to the tech](#)



### 5 – Working towards a better world

As an environmentally-conscious company, we prioritise sustainability and refuse to engage in greenwashing. We're working towards being a net zero carbon business by 2030.

[How we're reducing our impact](#)



### 6 – Exceptional service as standard

Your people are our priority. It's why we've developed our customer promise – the values by which we operate – so we can deliver you a great experience.



View full building video





# Working towards a better world



During the fit out of 16 Dufour's Place we...



Diverted 97% of waste from landfill.



Procured all fittings and finishing through environmental product declarations (EPD's).



Achieved SKA Gold for our sustainable fit out.



Installed efficient zoned lighting and temperature control systems.



Used 100% sustainable timber.



Created breakout areas on every floor, to provide a rest area for staff wellbeing.

At GPE, we are:



**Integrating climate resilience across our business.**

- Creating more green space.
- Creating adaptable, future-proof buildings.



**Decarbonising our business to become net zero by 2030.**

- Using 100% renewable energy.
- Low carbon by design, including using preloved materials and furniture.



**Putting health and wellbeing front and centre.**

- Fitwell/WELL enabled buildings and air quality monitoring.
- Creating inclusive spaces and running wellbeing events.



**Creating a lasting positive social impact in our communities.**

- Supporting social enterprises and charities.
- Supporting local employment and apprenticeships.



# Availability schedule

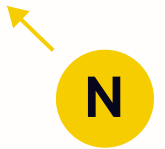
Let's get down to the details...

The details

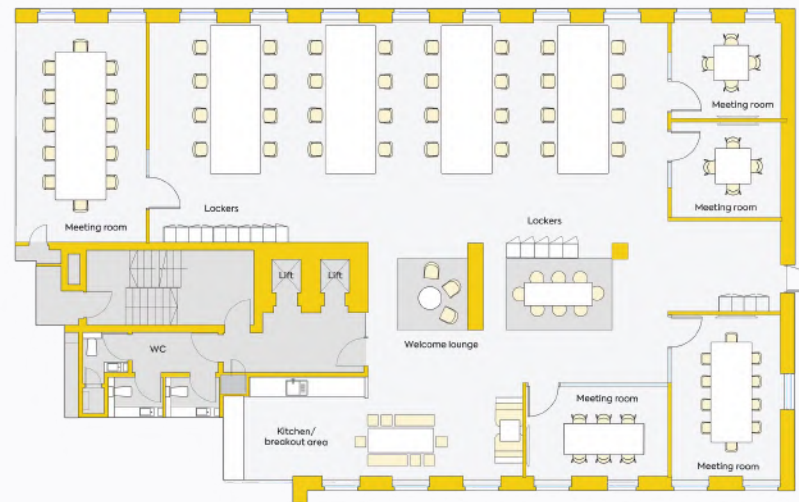
Floor	Configuration	Max occupancy	Sq ft	Floorplan	Key features	Availability
6th	20 desks + 1 meeting room, phone booth + breakout spaces	27	1,595		} Access to terrace with views over Soho	<input checked="" type="radio"/> Recently let
5th	Currently let	34	2,018			<input type="radio"/> Currently Let
4th	32 desks + 2 meeting rooms, phone booth + breakout spaces	36	2,210			<input checked="" type="radio"/> Recently let
3rd	Currently let	52	3,145		-	<input type="radio"/> Currently Let
2nd	32 desks + 5 meeting rooms, + breakout spaces	56	3,143		Ample meeting rooms and breakout areas	<input checked="" type="radio"/> Recently let
1st	Currently let	52	3,103		-	<input type="radio"/> Currently Let
Ground	Currently let	24	1,087		Shared café lounge & terrace	<input type="radio"/> Currently Let
Lower Ground	-	-	-		Cycle storage & showers	

# Floorplan

## 2nd floor, 16 Dufour's Place



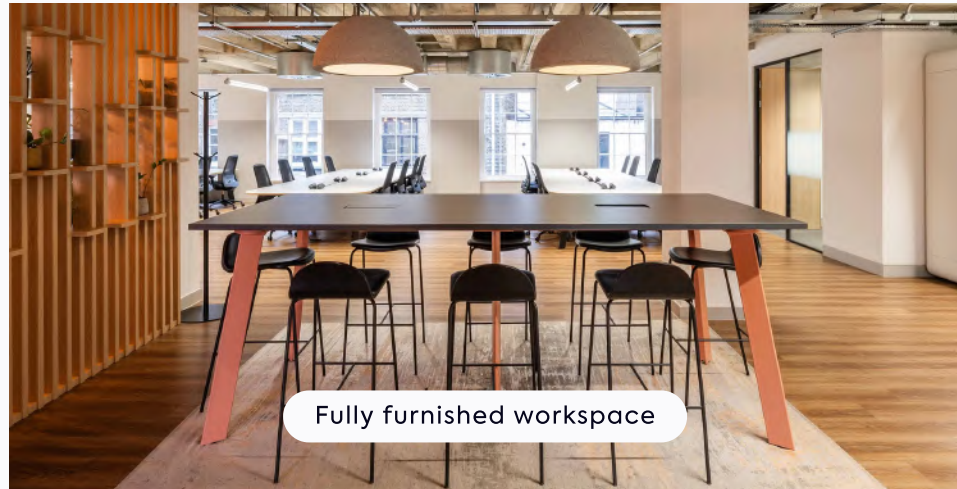
-  Soho
-  3,143 sq ft
-  56 maximum occupancy
-  32 current desks
-  5 meeting rooms
-  2 breakout areas
-  Welcome lounge
-  2 person pod
-  Kitchen
-  Coffee machine



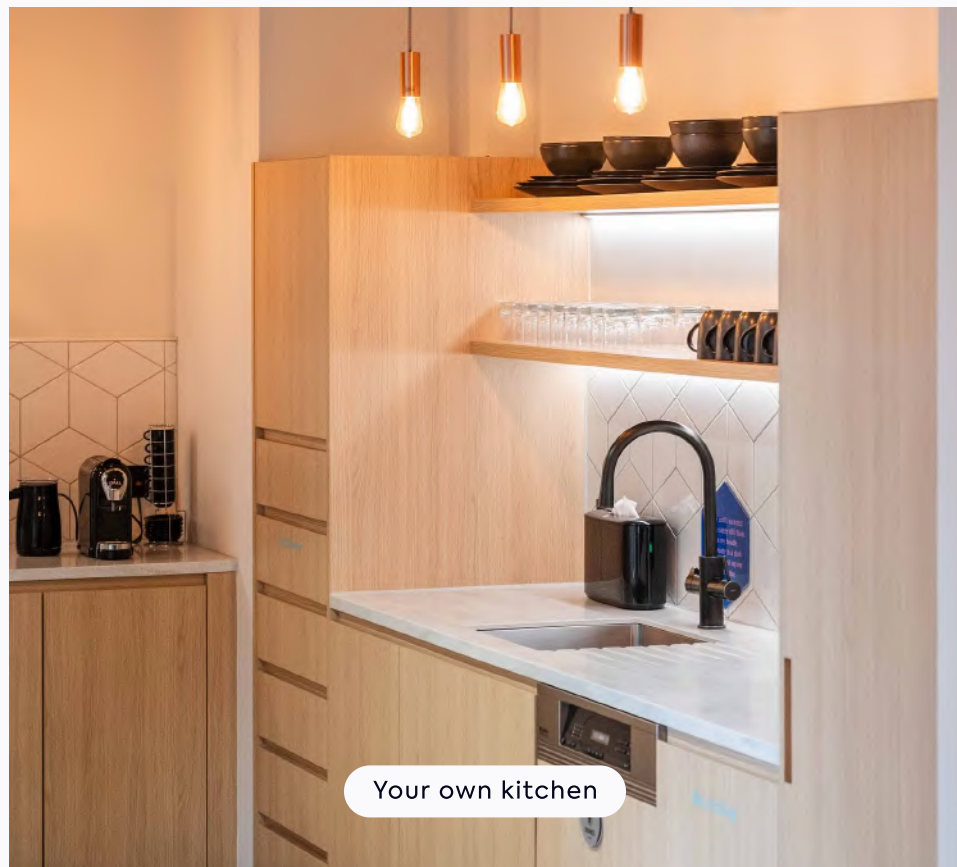
[View/download 2D floorplan](#)



# 2nd Floor



Fully furnished workspace



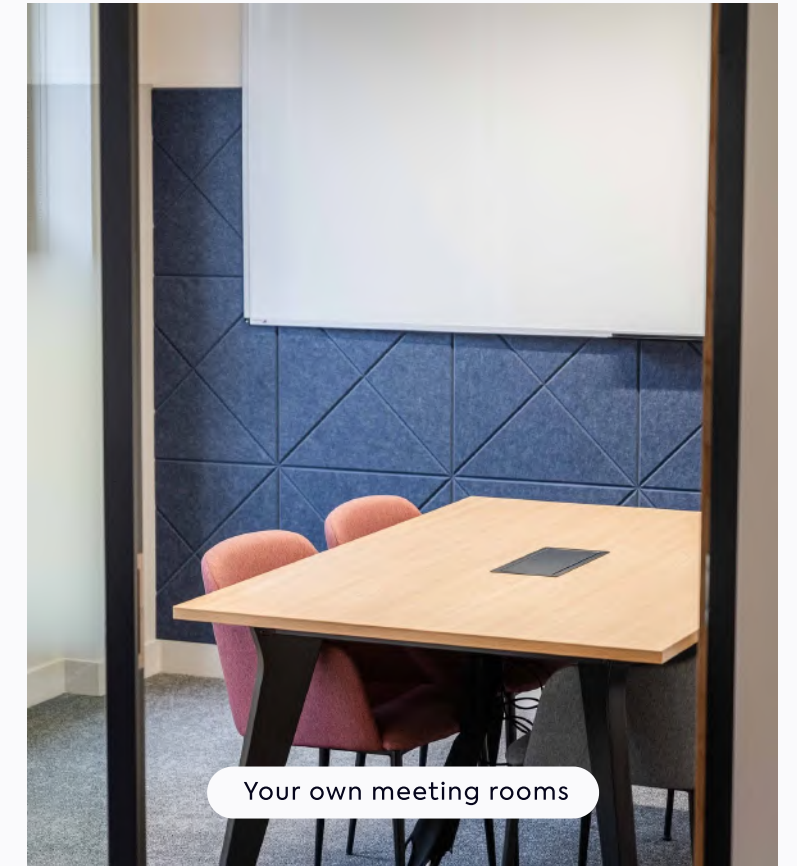
Your own kitchen



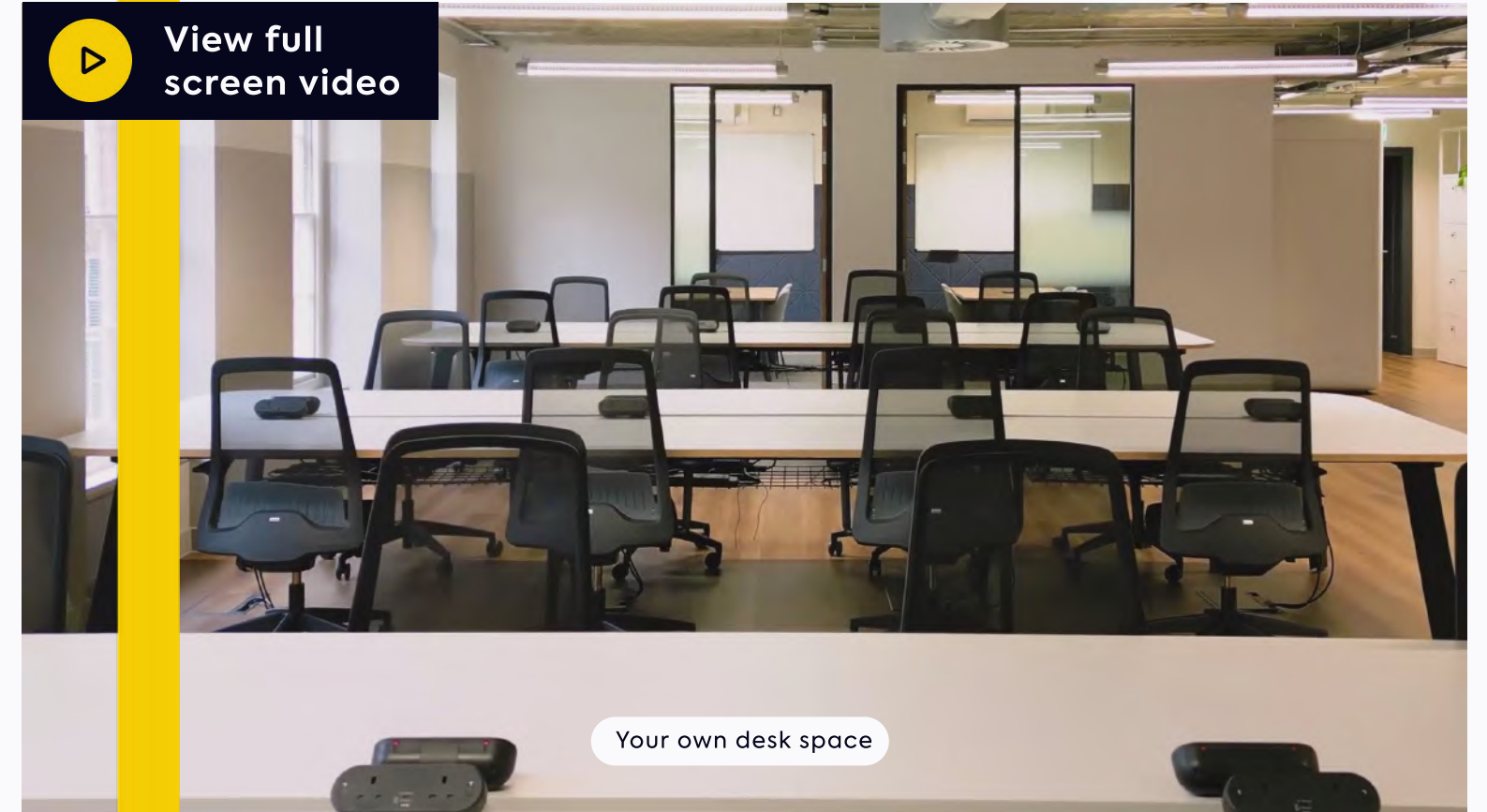
Your own breakout areas



Your own phone booths



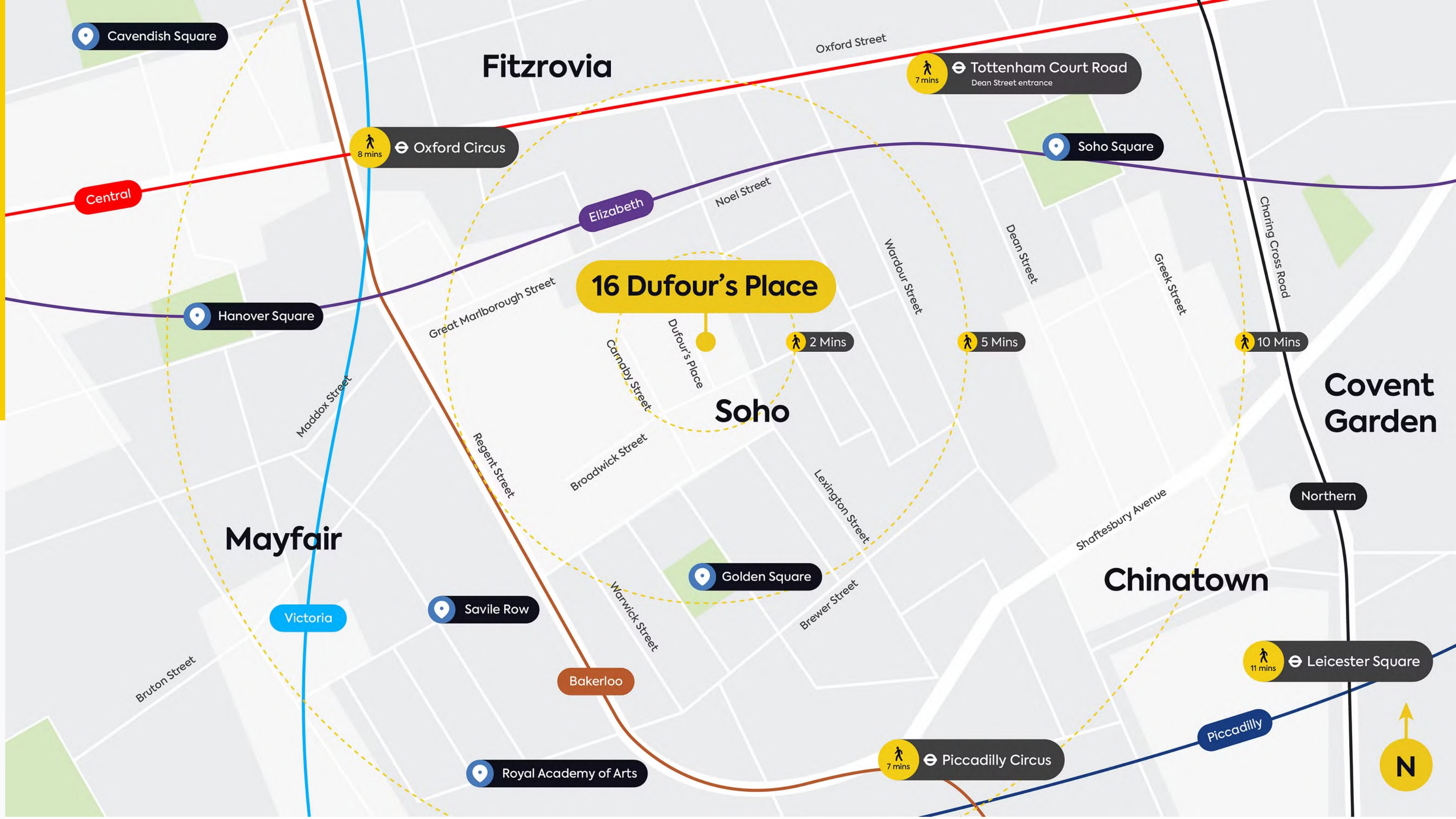
Your own meeting rooms



[View full screen video](#)

Your own desk space

# Truly Connected



Nestled in the heart of London, 16 Dufour's Place benefits from excellent public transport links, including Tottenham Court Road and Oxford Circus, which are within walking distance and grant access to multiple lines for seamless travel across London.

**Walking Distance**

**Tottenham Court Road**  
7 mins

**Piccadilly Circus**  
7 mins

**Oxford Circus**  
8 mins

**Leicester Square**  
11 mins





Dean Street

See



Berwick Street



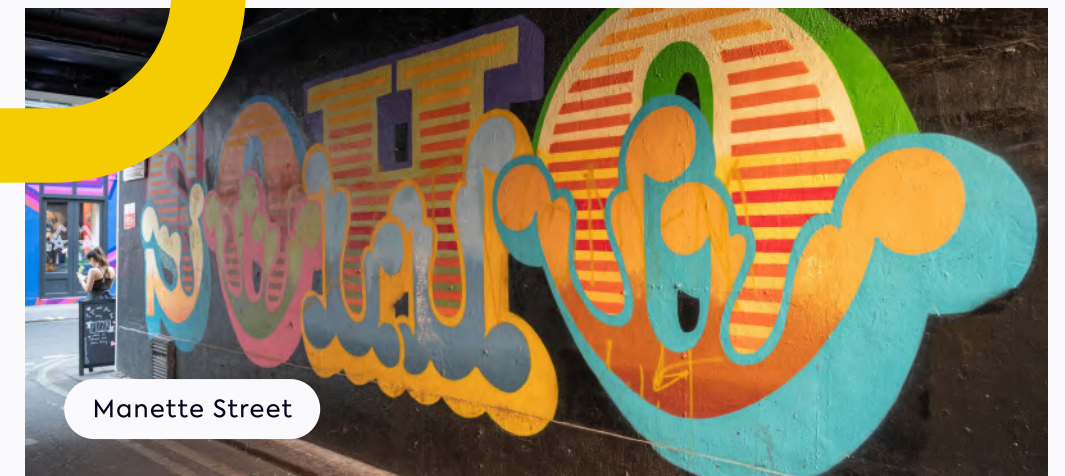
Soho Square

Relax



Old Compton Brasserie

Taste



Manette Street



The French House

# Tried and tasted

Within

# 10

minutes



## Highlights

- 1 The Life Goddess
- 2 Sucre
- 3 Antidote Wine Bar
- 4 Italian Bear Chocolate
- 5 Bao
- 6 Quo Vadis
- 7 The French House
- 8 Simmons Bar
- 9 Bar Italia
- 10 Cafe Boheme



## Our pick

**7. The French House**  
An iconic watering hole with a no tech rule. Ideal for a quick break from your screen.



# Good food



Soho has an abundance of diverse dining options that cater for every palate, from authentic Greek at The Life Goddess, to Asian inspired street food at Bao. As the sun sets, Soho's vibrant nightlife comes alive with plenty of places to go for after work cocktails.

# Spoilt for choice

Within

# 10

minutes



## Highlights

- 1 Boom Battle Bar
- 2 Outernet
- 3 Soho Square
- 4 Liberty London
- 5 Sounds of the Universe
- 6 Wizard Exploratorium
- 7 Ronnie Scott's
- 8 Golden Square
- 9 Soholistic Spa
- 10 The Crystal Maze



### Our pick

**7. Ronnie Scott's**  
A basement jazz club with an old school vibe. There's nowhere else quite like it.



# Things to do



Soho has a range of experiences, from iconic theatres to eclectic boutiques and art galleries. You can even try your hand at The Crystal Maze experience and see who in your team has what it takes in The Crystal Dome.

# On your doorstep

Within

# 10

minutes



## Highlights

- 1 The Photographer's Gallery
- 2 Cahoots
- 3 Berwick Street Market
- 4 The Vault at Milroy's of Soho
- 5 Curzon Soho

### Our pick

**5. Curzon Soho**  
An independent cinema with an atmosphere, comfort and a bar - what's not to like!



# Hidden Gems



There's lots waiting to be discovered in Soho. Bustling street markets, art galleries and independent cinemas. Take a peek at some lesser known cocktail bars - one hidden away behind a bookcase and the other in an abandoned train station!

# Get in touch

We hope we've piqued your interest, but it's only just the beginning.  
We'd love to show you more. Get in touch to book your viewing today.



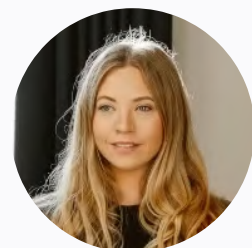
**David Korman**

+44 (0) 7435 939 956  
david.korman@gpe.co.uk



**Grace Tomlinson**

+44 (0) 7871 678 728  
grace.tomlinson@gpe.co.uk



**Molly Maguire**

+44 (0) 7887 841 816  
molly.maguire@gpe.co.uk

Talk to us



Find a space that's fully  
yours. More locations  
across London.

See availability