

GPE.



Discover Kingsland House.

122/124 Regent Street, Soho, W1R 5FE

[GPE.CO.UK/PORTFOLIO/KINGSLAND-HOUSE](https://gpe.co.uk/portfolio/kingsland-house)



Fitted
workspace

Availability.

2,243 sq ft of fitted space available at Kingsland House

Floor	Desks	Sq ft	Highlight	Availability
5th - North	8	558	Breakout area and tea point	Q3 2024
5th - South	8	562	Meeting room and breakout space	Q3 2024
3rd - North	6	554	Welcome area, meeting room and tea point	Available now
1st - South	4	569	Meeting room, breakout area and tea point	Q3 2024

4 units available



Overview.

Kingsland House is an attractive Grade II Listed building constructed in the 1920s, prominently positioned on the east side of Regent Street.

Kingsland House comprises of 5 floors of workspace, offering fitted workspaces with excellent natural light, ready to move in. From the design specification to customer services, every detail is considered and covered.

Located in the West End, offering contrasting experiences of the best London has to offer. Exclusive Mayfair boasts world-class shopping, dining and luxury at every corner. Iconic Regent Street is buzzing with atmosphere and eclectic Soho gives an edgier and creative vibe.

Kingsland House.



Building size –
8,700 sq ft



24-hour access



Period façade



Security Mon – Fri,
7:30am to 5:30pm

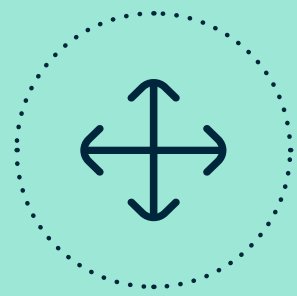


Centrally located
on Regent Street

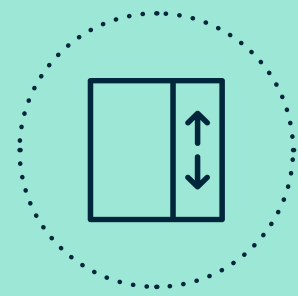
Space to connect



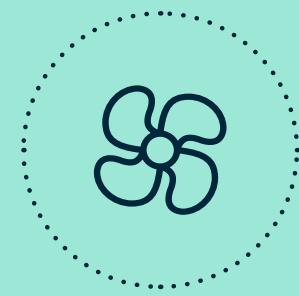
Specification.



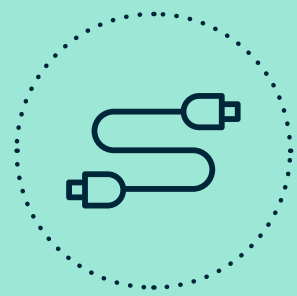
Fitted workspace



Lift



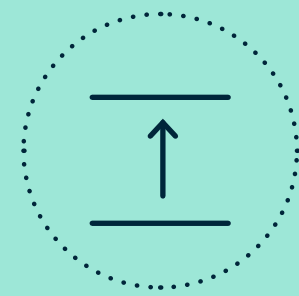
Air cooling



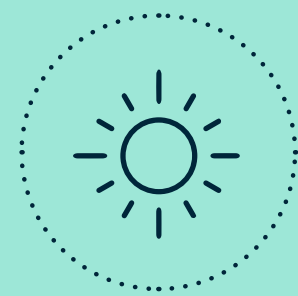
Flood wired
CAT 6 cabling



WCs on each floor



High ceilings



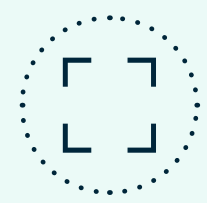
Great natural light



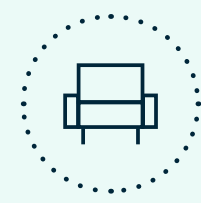
Floorplan.



1st floor - South



569 sq ft



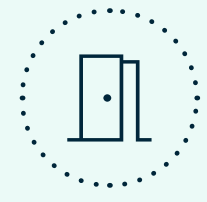
breakout space



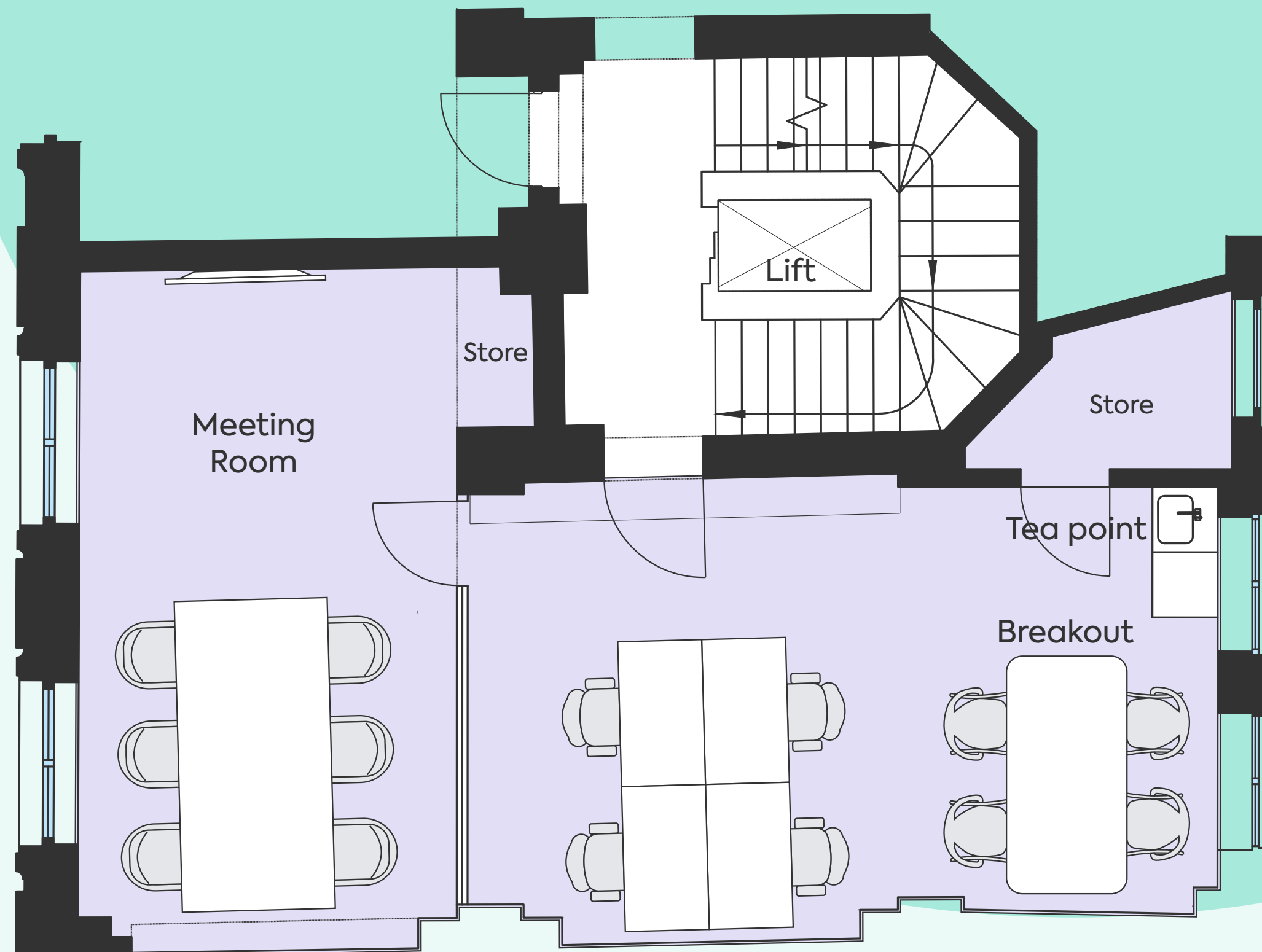
4 total headcount



tea point



meeting room



Not to scale

Floorplan.



3rd floor - North



554 sq ft



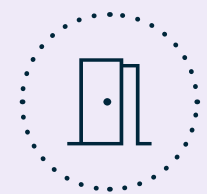
breakout space



6 total headcount



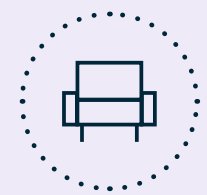
tea point



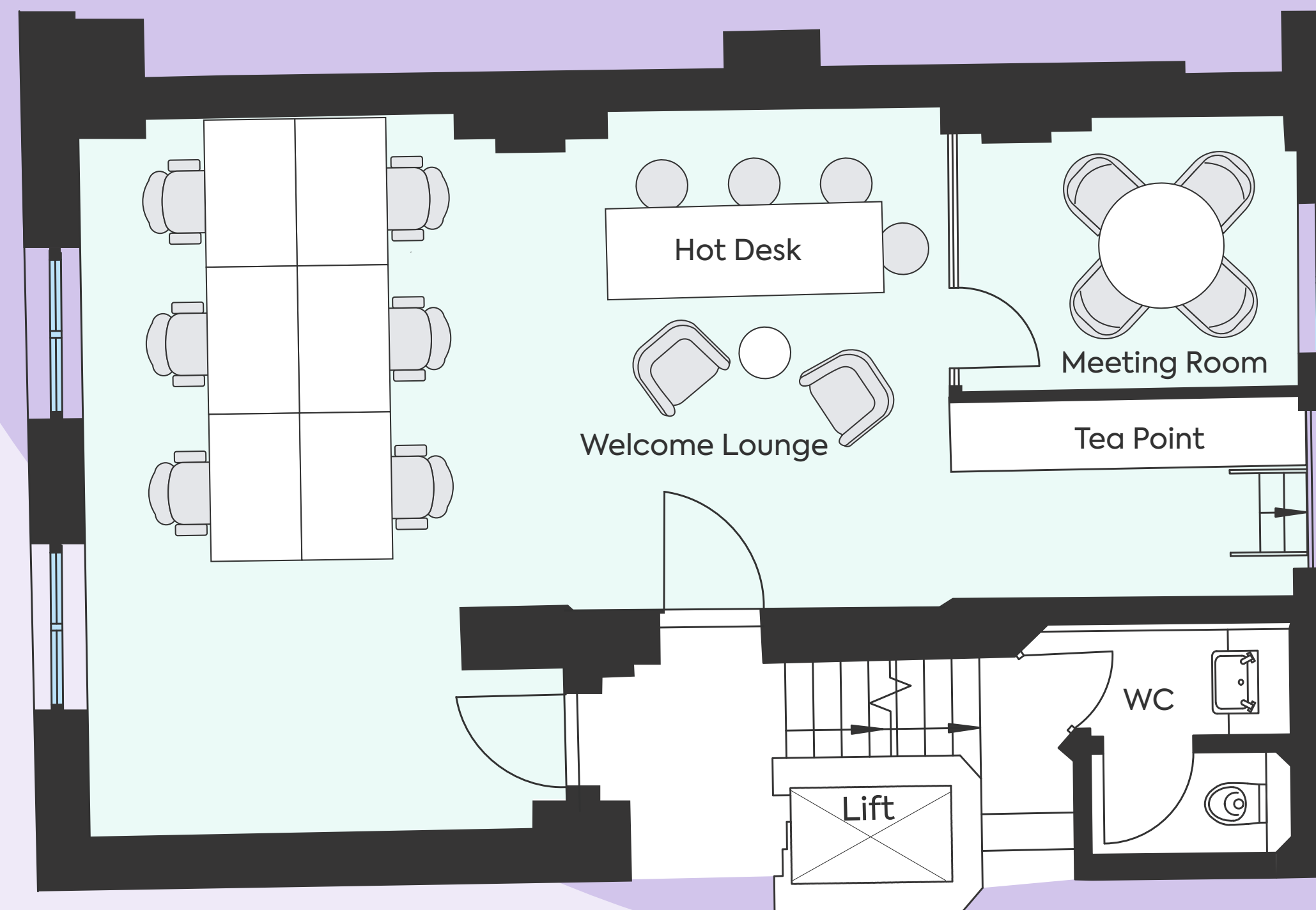
meeting room



WCs on floor



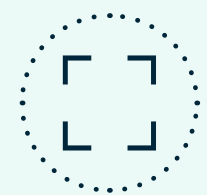
welcome area



Not to scale

Floorplan.

5th floor - North



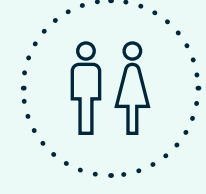
558 sq ft



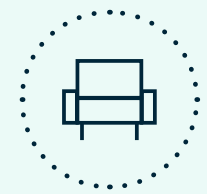
tea point



8 total headcount

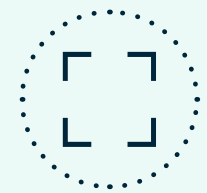


WCs on floor



breakout space

5th floor - South



562 sq ft



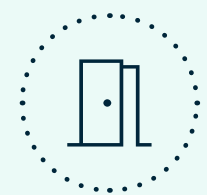
breakout space



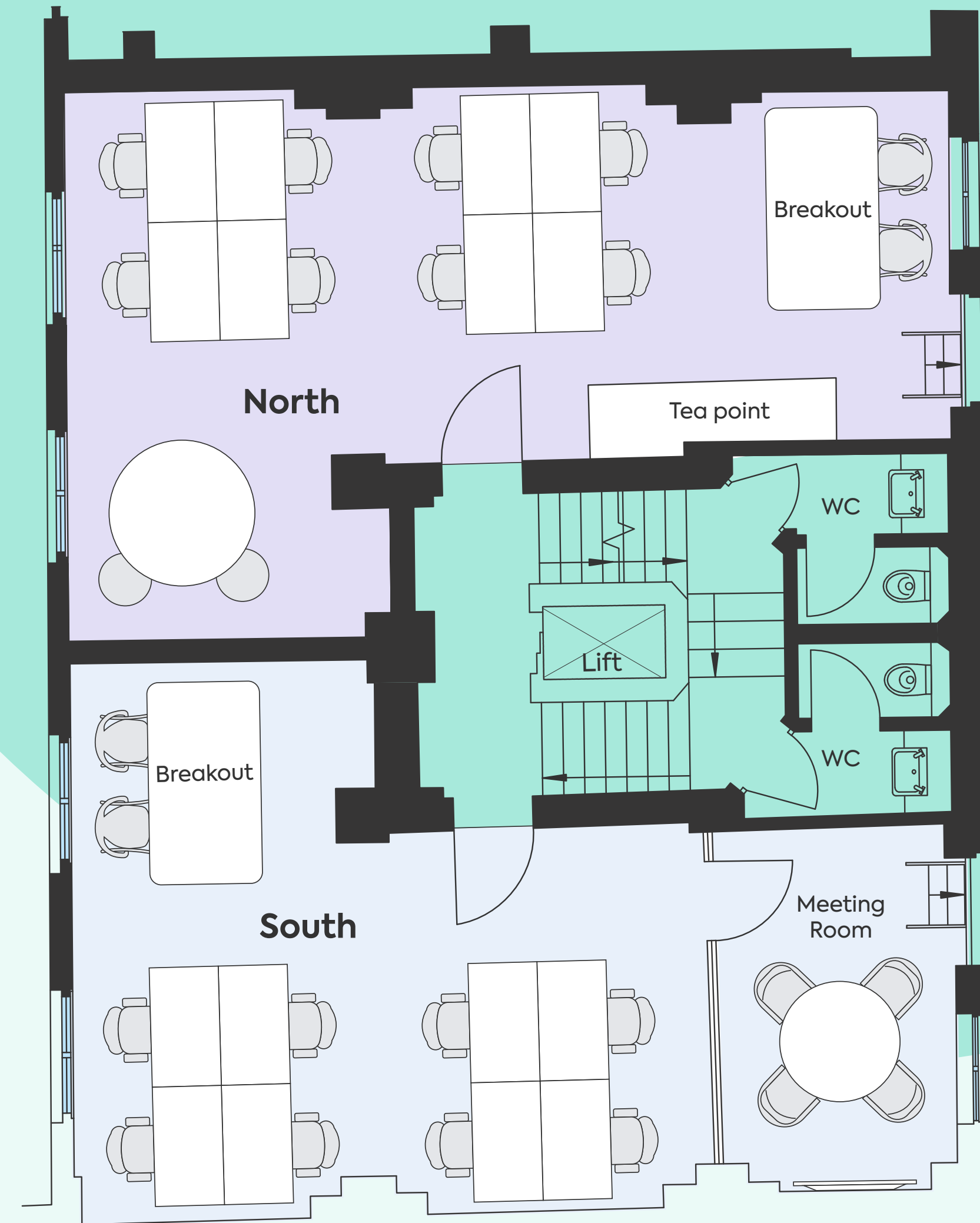
8 total headcount



WCs on floor



meeting room



Not to scale

Space to collaborate



Location.



Kingsland House has access to 7 tube lines via 4 tube stations, including Oxford Circus, Piccadilly, Leicester Square and Bond Street, with the new Elizabeth Line.

Charing Cross overground station is also just a short walk away. These nearby stations connect to 3 airports: Heathrow, Gatwick and London City.



Travel times from Oxford Circus

04
minutes

King's Cross
St. Pancras

- Circle
- Northern
- Piccadilly
- Victoria

06
minutes

Euston

- Northern
- Victoria

09
minutes

Bank

- Central
- Northern
- Waterloo & City
- DLR

11
minutes

Baker Street

- Bakerloo
- Circle
- Jubilee
- Hammersmith & City

Travel times from Bond Street (via Elizabeth Line)

03
minutes

Paddington

12
minutes

Liverpool
Street

15
minutes

Canary
Wharf

32
minutes

Heathrow

Area.

Be part of the buzz and lively atmosphere of Regent Street as well as experiencing the vibrancy of Soho and luxury of Mayfair.

Kingsland House boasts an enviable position at the centre of the West End, alive with a plethora of shopping, dining and experiences to choose from.

Enjoy a choice of restaurants just across the road within Heddon Street or venture into Kingly Court for a vast range of international cuisine. Take advantage of quick access to Soho and all its bars, enjoy world-class shopping on Oxford Street or stroll to Mayfair for a more refined experience.

Kingsland House.

14
Galleries within
10 min walk



75
Shops on
Regent Street



21
Restaurants in
Kingly Court



Amenities.

Eat

- 01 Heddon Street
- 02 Pollen Street Social
- 03 The Life Goddess
- 04 Antidote Wine Bar
- 05 Brasserie Zedel
- 06 Dirty Bones Soho
- 07 Mountain
- 08 Dehesa

Drink

- 09 Grind Coffee
- 10 The French House
- 11 Cahoots
- 12 Masons Arms
- 13 Hideaway Coffee House
- 14 Ronnie Scott's
- 15 Bar Americain

Experience

- 16 Carnaby Street
- 17 Saville Row
- 18 Royal Academy of Arts
- 19 Third Space Gym
- 20 Sounds of the Universe
- 21 Golden Square
- 22 Liberty London
- 23 The Photographers Gallery
- 24 Halcyon Gallery
- 25 Fortnum & Mason



Contact.

GPE.

Contact our team at GPE:

Richard Carson

richard.carson@gpe.co.uk

+44 (0) 7436 030 120

Sarah Goldman

sarah.goldman@gpe.co.uk

+44 (0) 7435 989 967



Andrew Wedderspoon

awedderspoon@savills.com

+44 (0) 7807 999 363

Katie Miedzianowska-Sinclair

kate.msinclair@savills.com

+44 (0) 7790 923 878

Kian Kelly

kian.kelly@savills.com

+44 (0) 7890 903 968



**BNP PARIBAS
REAL ESTATE**

Alex Walters

alex.walters@realestate.bnpparibas

+44 (0) 7900 607 055

Alex Hunt

alex.hunt@realestate.bnpparibas

+44 (0) 7717 493 802

Harry Radford

harry.radford@realestate.bnpparibas

+44 (0) 7721 459 564

Visit our
website

