

GPE.

Discover Carrington House.

126/130 Regent Street, Soho, W1B 5SE.

Fitted
workspace

[GPE.CO.UK/PORTFOLIO/CARRINGTON-HOUSE](https://gpe.co.uk/portfolio/carrington-house)



Availability.

6,957 sq ft of fitted space available now at Carrington House

Floor	Desks	Sq ft	Highlight	Availability
1st Floor West	22	2,105	3 meeting rooms, kitchen area, breakout space and phone pod	Q4 2025
3rd Floor West	22	2,120	Welcome area, 3 meeting rooms, phone pod and collaboration area	Q4 2025
3rd Floor East	34	2,732	3 meeting rooms, phone pod, focus room, kitchen area and breakout space	Q4 2025



Overview.

Built in the 1920s, Carrington House is an attractive Grade II Listed building positioned prominently on the east side of Regent Street.

Carrington House comprises of 5 floors of workspace, including a welcoming reception and well-appointed end of trip facilities. Our fitted offering provides you with ready-to-move-in workspace.

From the design specification to customer services, every detail is considered and covered.

Located in the West End, offering contrasting experiences of the best London has to offer, exclusive Mayfair boasts world-class shopping, dining and luxury at every corner. Iconic Regent Street is buzzing with atmosphere and eclectic Soho gives an edgier and creative vibe.



Building size –
31,100 sq ft



Bike storage



Showers



24-hour access
and security



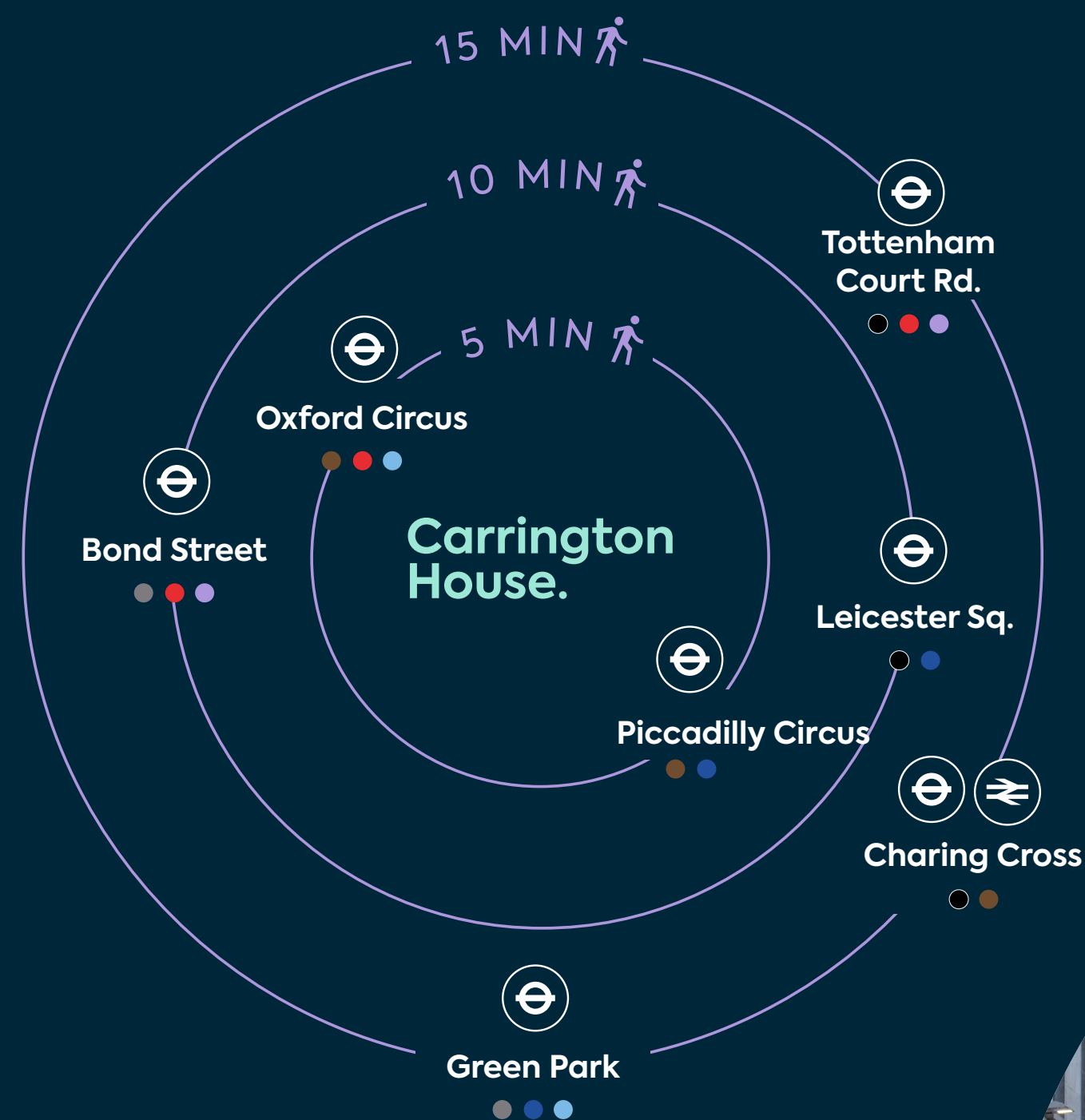
On-site
reception



Centrally located
on Regent Street



Location.



Carrington House has access to 7 tube lines via 4 tube stations, including Oxford Circus, Piccadilly Circus, Leicester Square and Bond Street, with the new Elizabeth Line.

Charing Cross overground station is also just a short walk away. These nearby stations connect to 3 airports: Heathrow, Gatwick and London City.



Travel times from Oxford Circus

04 minutes	06 minutes	09 minutes	11 minutes
King's Cross St. Pancras	Euston	Bank	Baker Street
<ul style="list-style-type: none"> Circle Northern Piccadilly Victoria 	<ul style="list-style-type: none"> Northern Victoria 	<ul style="list-style-type: none"> Central Northern Waterloo & City DLR 	<ul style="list-style-type: none"> Bakerloo Circle Jubilee Hammersmith & City

Travel times from Bond Street (via Elizabeth Line)

03 minutes	12 minutes	15 minutes	32 minutes
Paddington	Liverpool Street	Canary Wharf	Heathrow

Amenities.

Eat

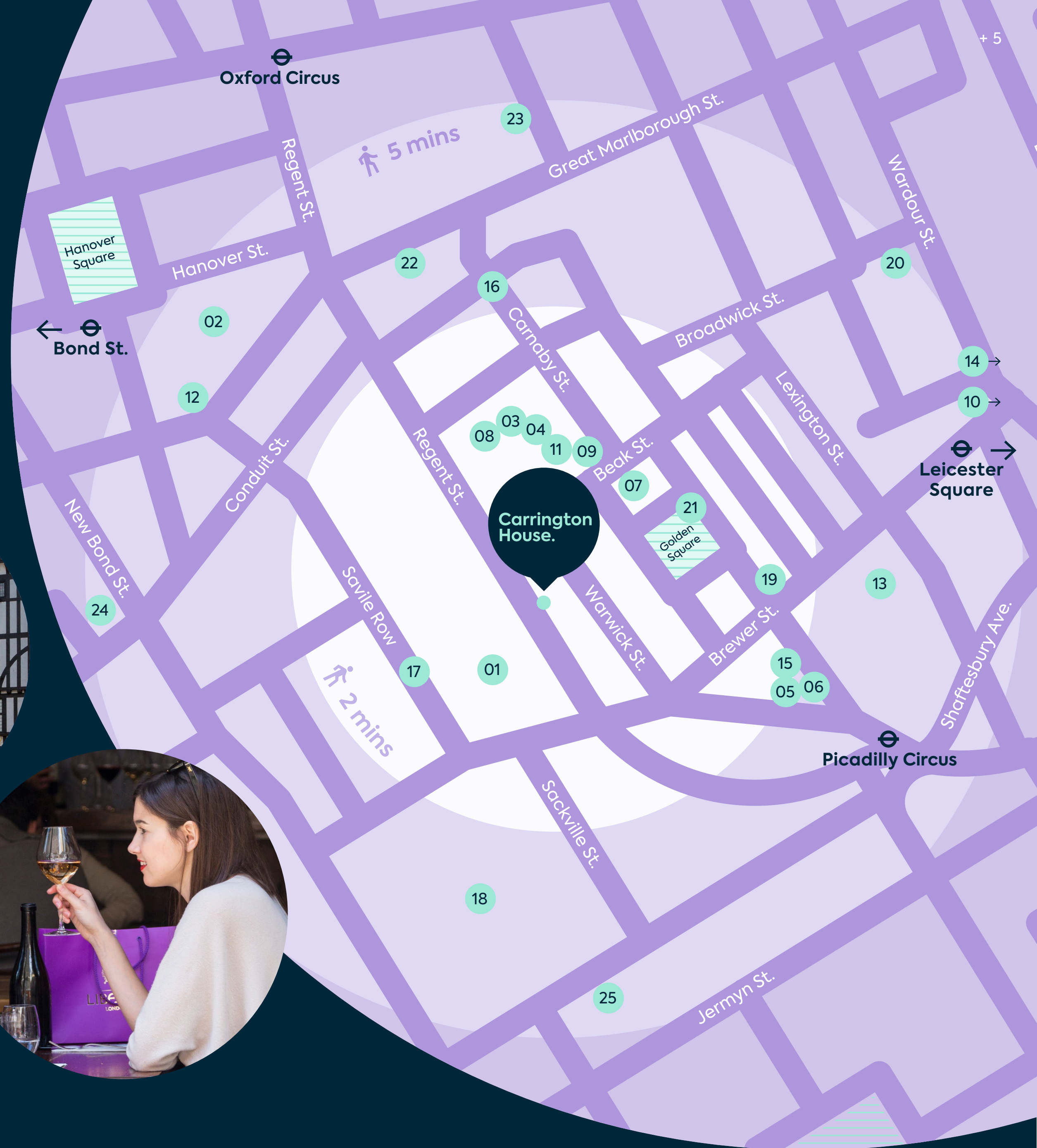
- 01 Heddon Street Kitchen
- 02 Motcombs
- 03 The Life Goddess
- 04 Antidote Wine Bar
- 05 Brasserie Zedel
- 06 Dirty Bones Soho
- 07 Mountain
- 08 Dehesa

Drink

- 09 Grind Coffee
- 10 The French House
- 11 Cahoots
- 12 Masons Arms
- 13 Hideaway Coffee House
- 14 Ronnie Scott's
- 15 Bar Americain


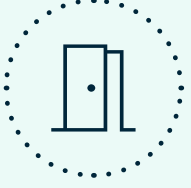

Experience



- 16 Carnaby Street
- 17 Saville Row
- 18 Royal Academy of Arts
- 19 Third Space Gym
- 20 Sounds of the Universe
- 21 Golden Square
- 22 Liberty London
- 23 The Photographers' Gallery
- 24 Halcyon Gallery
- 25 Fortnum & Mason



Floorplan.

1st Floor West

-  2,105 sq ft
-  22 desks
-  3 meeting rooms
-  Kitchen area

-  Breakout area
-  Phone pod





Kitchen area

Carrington House.



Workspace



10-person meeting room



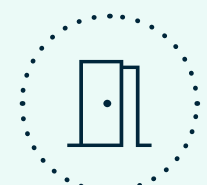
Breakout space

Floorplan.

3rd Floor West

 2,120 sq ft

 22 desks

 3 meeting rooms

 Welcome area

 Kitchen area

 Collaboration area

 Phone pod





Workspace

Carrington
House.



Workspace



Welcome area



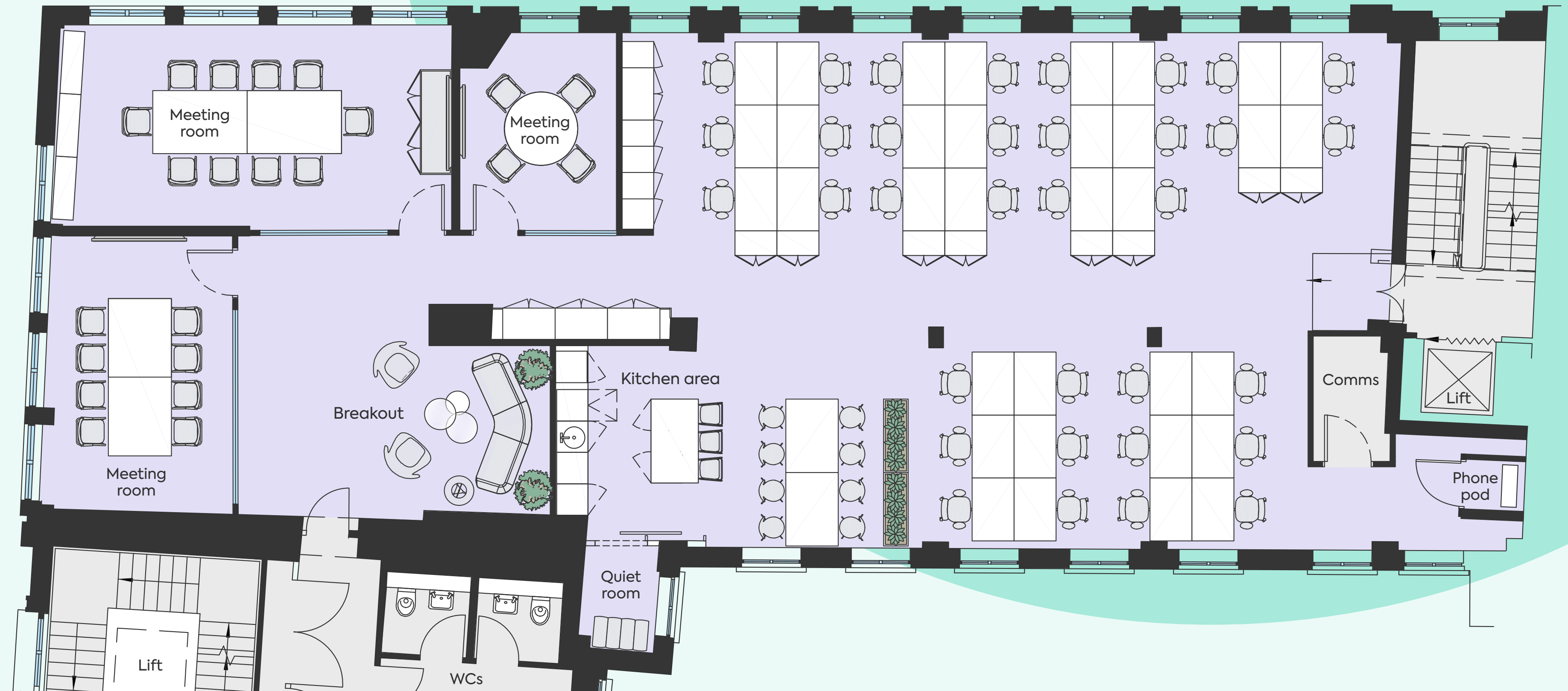
Breakout area

Floorplan.



3rd Floor East

-  2,732 sq ft
-  34 desks
-  3 meeting rooms
-  Kitchen area
-  Breakout area
-  Phone pod
-  Quiet room





Kitchen & breakout area



10-person meeting room



Welcome area & meeting room



Workspace

Contact.

For more information, please contact a member of the team:



Max Chalk
max.chalk@colliers.com
+44 (0) 7522 867 157

Joseph Mishon
joseph.mishon@colliers.com
+44 (0) 7876 724 488

Charlotte Ashton
charlotte.ashton@colliers.com
+44 (0) 7541 958 117

Suzi Braithwaite
suzi.braithwaite@colliers.com
+44 (0) 7551 040 609

GPE.

All CGIs are for indicative purposes only. Misrepresentation ACT 1967: Whilst all the information in these particulars is believed to be correct, agent nor Pontsarn Investments guarantee its accuracy nor is it intended to form any part of any contract. All areas quoted are approximate.

Visit our
website

